

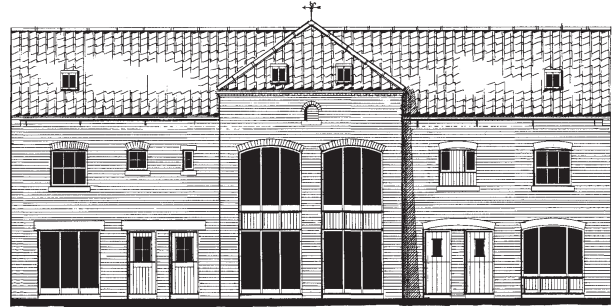
# BROTTON HALL & THE COURTYARD



Development of 2 & 3 bedroom houses and 1 & 2 bedroom apartments  
For more information tel: 01287 201286

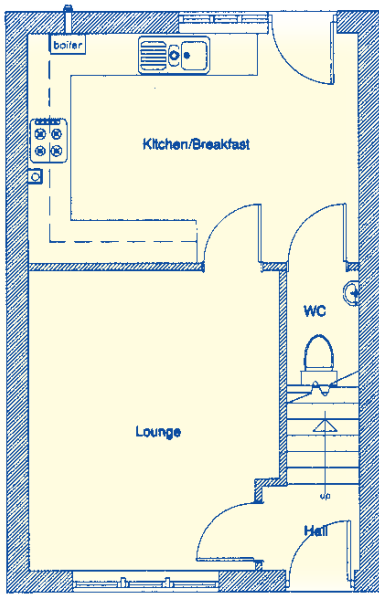
## Plots 8 to 11

A newly built stylish 3 bedroomed cottage located in the courtyard to the rear of Brotton Hall set over 3 floors. The cottages benefit from a fully turfed garden to the rear and a designated parking space along with gas central heating while the master bedroom comes with an en suite bathroom. The kitchen comes complete with an integrated oven & hob whilst the purchaser has a choice of unit styles & tiles. The cottages also come with the NHBC 10 year buildmark warranty.



plots 8 to 11

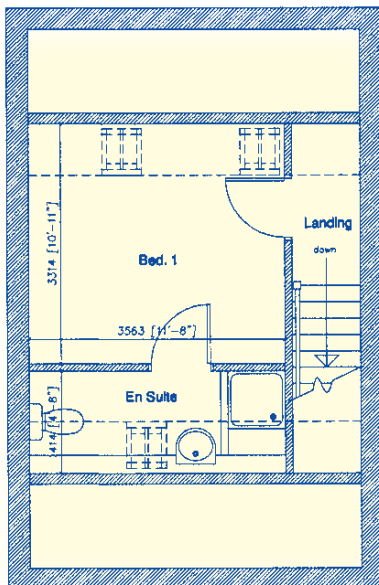
## Floor plans and dimensions



### < Ground Floor

Living Room  
4.17m x 3.51m

Kitchen/Breakfast Room  
4.61m x 3.17m



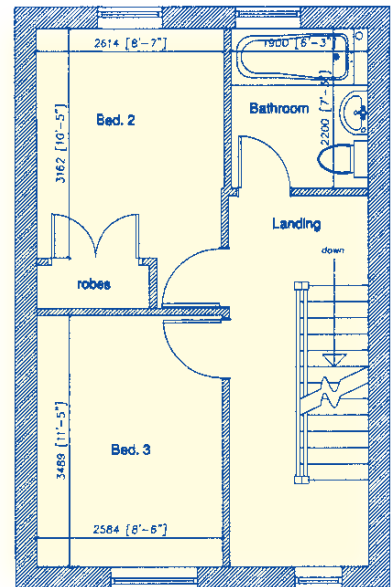
### < Second Floor

Bedroom 1  
3.93m x 2.57m

### First Floor >

Bedroom 2  
3.56m x 3.31m

Bedroom 3  
3.16m x 2.55m



\* Floor plans only show approximate dimensions for a typical Westgate Home of its type. Within NHBC guidelines, the dimensions for a specific house may vary as each house is built individually.

